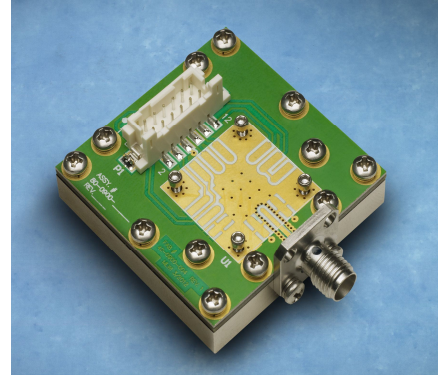


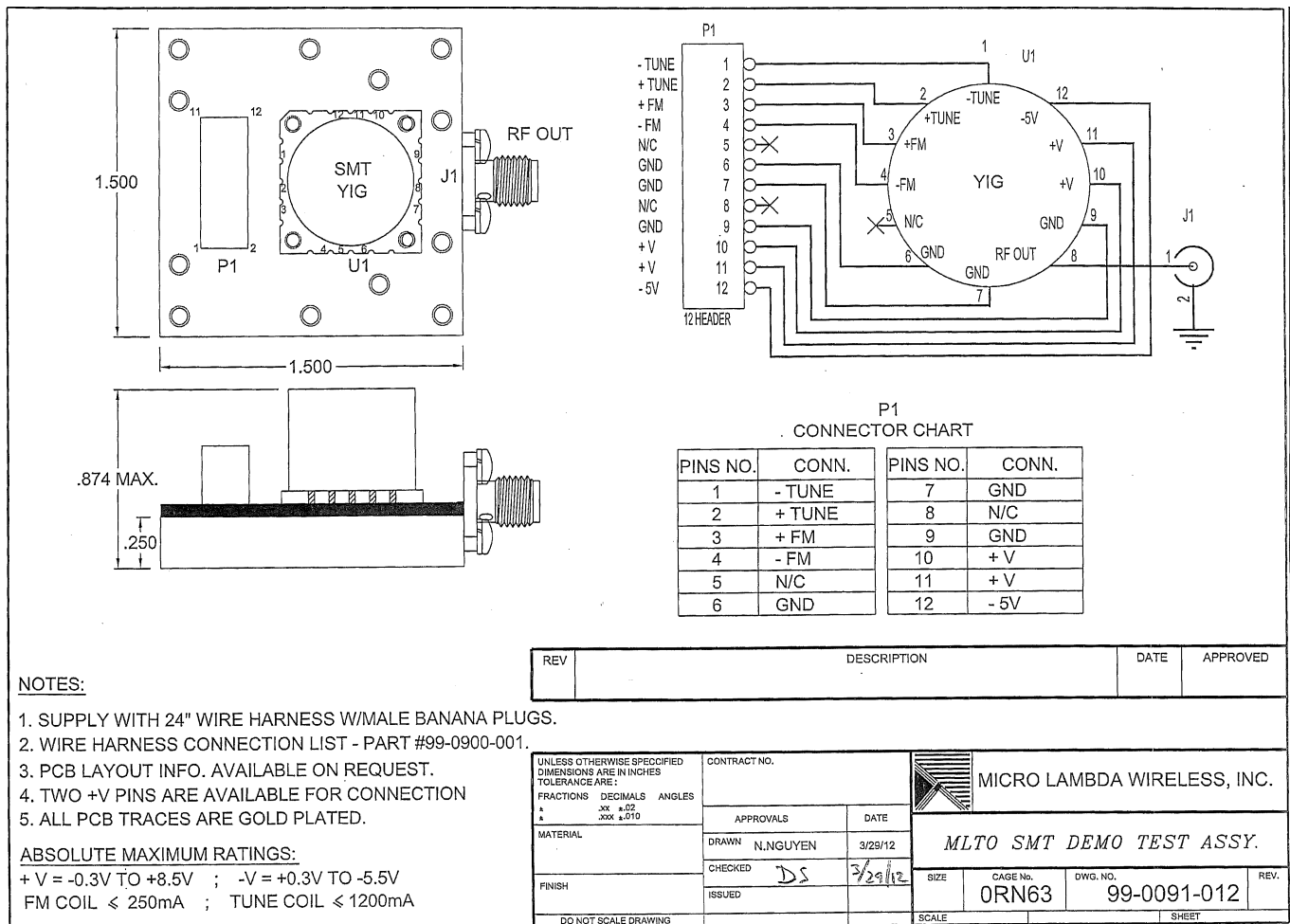
FEATURES

- TO-8 SMT Interface
- Simple Bolt-On Operation
- SMA RF Output
- Compatible DC Connector Provided



DESCRIPTION

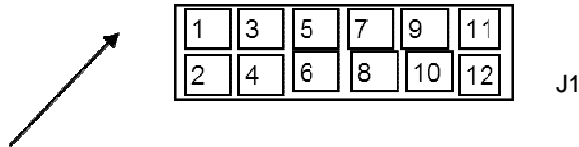
The MICRO LAMBDA MLOTF-Series Oscillator Test Fixture has been specifically designed to accommodate all of the MLSMO model types. A compatible DC connector is provided to generate the necessary DC wire harness. DC wire harness instructions are given on page 2.



MLOTF-10000 wire harness wirelist

<u>WIRE #</u>	<u>COLOR</u>	<u>FROM</u>	<u>TO</u>	<u>NOTES</u>	<u>LENGTH</u>	<u>AWG</u>
1	YEL/BLK	J1-1	BANANA PLUG (MALE) BLK	-TUNE	24"	26
2	YELLOW	J1-2	BANANA PLUG (MALE) RED	+TUNE	24"	26
3	RED/ WHT	J1-3	BANANA PLUG (MALE) RED	+FM	24"	26
4	RED/BLK	J1-4	BANANA PLUG (MALE) BLK	-FM	24"	26
5	N/C	J1-5	NOT USED	N/C		
6	BLACK	J1-6	BANANA PLUG (MALE) BLK	GND	24"	26
7	N/C	J1-7	NOT USED	N/C		
8	N/C	J1-8	NOT USED	N/C		
9	N/C	J1-9	NOT USED	N/C		
10	BLUE	J1-10	BANANA PLUG (MALE) BLUE	+V	24"	26
11	N/C	J1-11	NOT USED	N/C		
12	GREEN	J1-12	BANANA PLUG (MALE) GREEN	-5V	24"	26

BACK VIEW OF CONNECTOR



NOTE: (2) NOTCHES ON TOP OF CONNECTOR

STEP 1 STRIP .1" OF INSULATION OFF OF EACH WIRE

STEP 2 SOLDER TO EACH PIN ON CONNECTOR J1, PER ABOVE WIRELIST.

STEP 3 INSTALL HEAT SHRINK ON EACH WIRE, COVERING THE PINS AND HEAT.

STEP 4 STRIP .5" OF INSULATION OFF THE OTHER END OF WIRES AND INSTALL BANANA PLUGS

NOTE: DO NOT PUT SOLDER ON THE WIRES ATTACHED TO BANANA PLUGS